

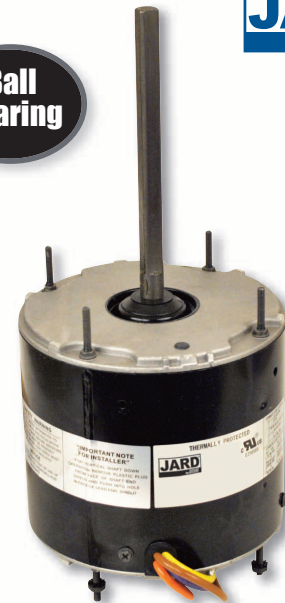
HVAC Motors



Condenser Fan Motors

Condenser Fan Motors

JARD replacement condenser fan motors are designed for residential and light commercial HVAC/R applications suitable for either vertical shaft-up or shaft-down mounting. Shell and end shields are enclosed for weather protection. A weep hole is provided in each end shield to allow condensate to drain.



Features:

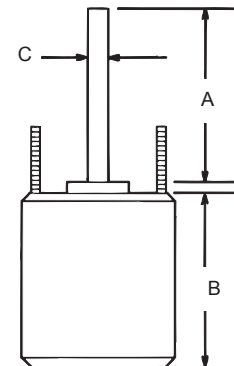
- All angle, sleeve or ball bearing
- Rheem mounting holes w/screws
- Reversible rotation
- Thru bolt or band mounting
- Capacitor requirement noted on motor label
- Up/Down design

Specifications:

- Class "B" insulation
- Single phase, 60 Hz
- Thermal overload protected
- Fan duty, continuous air over
- 26 & 36 inch leads
- UL Recognized

Cross Reference

| JARD No. | Economaster | Smart Electric | Wagner/ Diversitech | Packard | US Motors/ Emerson |
|----------|-------------|----------------|------------------------|---------|-----------------------|
| 22403 | EM3403 | - | - | 60825 | 1873 |
| 22404 | EM3404 | SE3338 | WG840204 | 40825 | 1874 |
| 22405 | EM3405 | SE3339 | WG840205 | 30825 | 1875 |
| 22746 | EM3746 | - | - | - | 1870 |
| 22727 | EM3727 | SE3727 | WG840727 | 43727 | 1859 |
| 22728 | EM3728 | SE3728 | WG840728 | 43728 | 1860 |
| 22729 | EM3729 | SE3729 | WG840729 | 43729 | 1861 |
| 22730 | EM3730 | SE3730 | WG840730 | 43730 | 1862 |
| 22731 | EM3731 | SE3731 | WG840731 | 43731 | 1868 |



Reversible Rotation - Single Speed

| MARS NO. | HP | VOLTS | AMPS | CAP REQUIRED | ENCL. | BRG. | DIMENSIONS | | | LEAD LENGTHS |
|----------|----|-------|------|--------------|-------|------|------------|---|---|--------------|
| | | | | | | | A | B | C | |

1075 RPM

| | | | | | | | | | | |
|-------|-----|---------|------|---------|------|------|------|------|-----|-------|
| 22727 | 1/6 | 208-230 | 0.90 | 5/370 | TEAO | Ball | 6.50 | 4.23 | 1/2 | 26" |
| 22728 | 1/4 | 208-230 | 1.8 | 5/370 | TEAO | Ball | 6.50 | 4.23 | 1/2 | 26" |
| 22729 | 1/3 | 208-230 | 2.4 | 7.5/370 | TEAO | Ball | 6.50 | 5.23 | 1/2 | 26" |
| 22730 | 1/2 | 208-230 | 3.5 | 10/370 | TEAO | Ball | 6.50 | 5.73 | 1/2 | 26" |
| 22731 | 3/4 | 208-230 | 5.2 | 10/370 | TEAO | Ball | 6.50 | 6.23 | 1/2 | 30.5" |

825 RPM

| | | | | | | | | | | |
|-------|-----|---------|-----|----------|------|------|------|------|-----|-----|
| 22403 | 1/6 | 208-230 | 1.0 | 5/370 | TEAO | Ball | 6.50 | 4.23 | 1/2 | 36" |
| 22404 | 1/4 | 208-230 | 1.6 | 5/370 | TEAO | Ball | 6.50 | 4.48 | 1/2 | 36" |
| 22405 | 1/3 | 208-230 | 1.9 | 7.5/370 | TEAO | Ball | 6.50 | 5.23 | 1/2 | 36" |
| 22746 | 1/2 | 208-230 | 2.8 | 12.5/370 | TEAO | Ball | 6.50 | 5.70 | 1/2 | 36" |

Toll Free: 800-445-4155 • Fax: 631-348-7160

MARS Technical Help Line: 800-678-9888 M-F 8 am - 5 pm EST

WARNING:
Cancer and Reproductive Harm
www.P65Warnings.ca.gov

Condenser Fan Motors

Condenser Fan Motors

JARD replacement condenser fan motors are designed for residential and light commercial HVAC/R applications suitable for either vertical shaft-up or shaft-down mounting. Shell and end shields are enclosed for weather protection. A weep hole is provided in each end shield to allow condensate to drain.

Features:

- All angle, ball bearing
- Rheem mounting holes w/screws
- Reversible rotation
- Thru bolt or band mounting
- Capacitor requirement noted on motor label
- Up/Down design
- 48" Leads

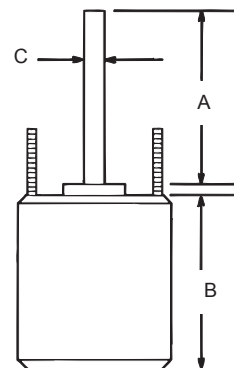
Specifications:

- Class "B" insulation
- Single phase, 60 Hz
- 70°C, 158°F
- Thermal overload protected
- Fan duty, continuous air over
- UL Recognized



Cross Reference

| JARD No. | Economaster | Smart Electric | Wagner/ Diversitech | Packard | US Motors/ Emerson |
|----------|-------------|----------------|------------------------|---------|-----------------------|
| 26726 | - | - | - | - | - |
| 26727 | EM3727 | - | WG840727 | 43727 | 1859 |
| 26728 | EM3728 | - | WG840728 | 43728 | 1860 |
| 26729 | EM3729 | - | WG840729 | 43729 | 1861 |
| 26730 | EM3730 | - | WG840730 | 43730 | 1862 |
| 26731 | EM3731 | - | WG840731 | 43731 | 1868 |
| 26403 | EM3403 | - | - | 60825 | 1873 |
| 26404 | EM3404 | - | WG840204 | 40825 | 1874 |
| 26405 | EM3405 | - | WG840205 | 30825 | 1875 |
| 26746 | EM3746 | - | - | - | 1870 |



Reversible Rotation - Single Speed

| MARS NO. | HP | VOLTS | AMPS | CAP REQUIRED | ENCL. | BRG. | DIMENSIONS | | | LEAD LENGTHS |
|----------|----|-------|------|--------------|-------|------|------------|---|---|--------------|
| | | | | | | | A | B | C | |

1075 RPM

| | | | | | | | | | | |
|-------|-----|---------|------|---------|------|------|------|------|-----|-----|
| 26726 | 1/5 | 208-230 | 0.90 | 5/370 | TEAO | Ball | 6.50 | 4.23 | 1/2 | 48" |
| 26727 | 1/6 | 208-230 | 0.90 | 5/370 | TEAO | Ball | 6.50 | 4.23 | 1/2 | 48" |
| 26728 | 1/4 | 208-230 | 1.8 | 5/370 | TEAO | Ball | 6.50 | 4.23 | 1/2 | 48" |
| 26729 | 1/3 | 208-230 | 2.4 | 7.5/370 | TEAO | Ball | 6.50 | 5.23 | 1/2 | 48" |
| 26730 | 1/2 | 208-230 | 3.5 | 10/370 | TEAO | Ball | 6.50 | 5.73 | 1/2 | 48" |
| 26731 | 3/4 | 208-230 | 5.2 | 10/370 | TEAO | Ball | 6.50 | 6.23 | 1/2 | 48" |

825 RPM

| | | | | | | | | | | |
|-------|-----|---------|-----|----------|------|------|------|------|-----|-----|
| 26403 | 1/6 | 208-230 | 1.0 | 5/370 | TEAO | Ball | 6.50 | 4.23 | 1/2 | 48" |
| 26404 | 1/4 | 208-230 | 1.6 | 5/370 | TEAO | Ball | 6.50 | 4.48 | 1/2 | 48" |
| 26405 | 1/3 | 208-230 | 1.9 | 7.5/370 | TEAO | Ball | 6.50 | 5.23 | 1/2 | 48" |
| 26746 | 1/2 | 208-230 | 2.8 | 12.5/370 | TEAO | Ball | 6.50 | 5.70 | 1/2 | 48" |

Toll Free: 800-445-4155 • Fax: 631-348-7160

MARS Technical Help Line: 800-678-9888 M-F 8 am - 5 pm EST

WARNING:
Cancer and Reproductive Harm
www.P65Warnings.ca.gov

Direct Drive Blower Motors

Direct Drive Blower Motors



JARD direct drive blower motors are Ideal for use in commercial and residential furnaces and air conditioners. All models are three speed standard efficiency and are electrically reversible.

Features:

- All angle sleeve bearing
- Rheem mounting holes
- 3 speeds
- 1/2 inch extended thru bolts
- 2-1/4 inch resilient rings
- 4 inch long, 1/2 inch diameter shaft

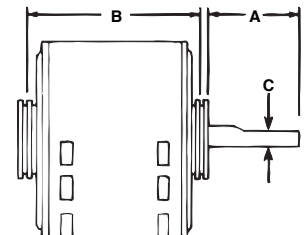
Specifications:

- Class "B" insulation
- Single phase, 60 Hertz
- Thermal overload protected
- Fan duty, continuous, air over
- Open construction
- 26 & 30 inch leads
- UL Recognized



Cross Reference

| JARD No. | Economaster | Smart Electric | Wagner/ Diversitech | Packard | US Motors/ Emerson |
|----------|-------------|----------------|------------------------|---------|-----------------------|
| 22583 | EM3583 | SE3583 | WG840583 | 43583 | 1863 |
| 22584 | EM3584 | SE3584 | WG840584 | 43584 | 1971 |
| 22585 | EM3585 | SE3585 | WG840585 | 43585 | 1864 |
| 22586 | EM3586 | SE3586 | WG840586 | 43586 | 1972 |
| 22587 | EM3587 | SE3587 | WG840587 | 43587 | 1865 |
| 22588 | EM3588 | SE3588 | WG840588 | 43588 | 1973 |
| 22589 | EM3589 | SE3589 | WG840589 | 43589 | 8904 |
| 22590 | EM3590 | SE3590 | WG840590 | 43590 | 8905 |



1075 RPM - Three Speed - Reversible Rotation

| MARS NO. | HP | ROTATION | VOLTS | AMPS | CAP REQUIRED | ENCL. | BRG. | DIMENSIONS | | | LEAD LENGTHS |
|----------|-----|----------|---------|------|--------------|-------|--------|------------|------|-----|--------------|
| | | | | | | | | A | B | C | |
| 22583 | 1/4 | Rev | 115 | 4.2 | 5/370 | OAO | Sleeve | 4.50 | 4.89 | 1/2 | 26" |
| 22584 | 1/4 | Rev | 208-230 | 1.8 | 5/370 | OAO | Sleeve | 4.50 | 4.89 | 1/2 | 26" |
| 22585 | 1/3 | Rev | 115 | 6.1 | 5/370 | OAO | Sleeve | 4.50 | 5.14 | 1/2 | 30" |
| 22586 | 1/3 | Rev | 208-230 | 2.7 | 5/370 | OAO | Sleeve | 4.50 | 5.14 | 1/2 | 26" |
| 22587 | 1/2 | Rev | 115 | 7.5 | 10/370 | OAO | Sleeve | 4.50 | 5.89 | 1/2 | 30" |
| 22588 | 1/2 | Rev | 208-230 | 3.2 | 7.5/370 | OAO | Sleeve | 4.50 | 5.64 | 1/2 | 30" |
| 22589 | 3/4 | Rev | 115 | 11.2 | 15/370 | OAO | Sleeve | 4.50 | 6.14 | 1/2 | 30" |
| 22590 | 3/4 | Rev | 208-230 | 4.5 | 10/370 | OAO | Sleeve | 4.50 | 6.14 | 1/2 | 30" |

Toll Free: 800-445-4155 • Fax: 631-348-7160

MARS Technical Help Line: 800-678-9888 M-F 8 am - 5 pm EST

WARNING:
Cancer and Reproductive Harm
www.P65Warnings.ca.gov

Multi-Horsepower Motors



Multi-Horsepower Direct Drive Motors

JARD multi-horsepower direct drive blower motors are used in residential and commercial furnaces, air conditioners, exhaust fans, and other air handling equipment installed in clean and dry environments. Four models cover both 115 and 208-230 volt applications from 1/6 through 3/4 HP. All models feature Rheem shell mounting holes.

Features:

- Rheem mounting holes
- Reversible rotation
- 2-1/4 inch resilient rings

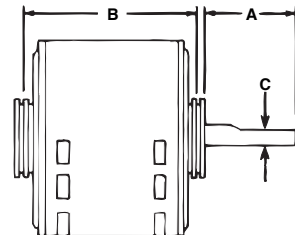
Specifications:

- Class "B" insulation
- Single phase, 60 Hz
- Thermal overload protected
- 41 inch leads
- UL Recognized



Cross Reference

| JARD No. | Economaster | Smart Electric | Wagner/ Diversitech | Packard | US Motors/ Emerson |
|----------|-------------|----------------|------------------------|---------|-----------------------|
| 22463 | EM3463 | SE3463 | WG840463 | 45460 | 5460 |
| 22464 | EM3464 | SE3464 | WG840464 | 45461 | 5461 |
| 22466 | EM3466 | SE3466 | WG840466 | 45470 | 5470 |
| 22467 | EM3467 | SE3467 | WG840467 | 45471 | 5471 |



1075 RPM - Four Speed - Reversible Rotation

| MARS NO. | HP | ROTATION | VOLTS | ENCL. | BRG. | DIMENSIONS | | | LEAD LENGTHS |
|----------|-----------|----------|-------|-------|--------|------------|------|-----|--------------|
| | | | | | | A | B | C | |
| 22463 | 1/6 - 1/2 | Rev | 115 | OAO | Sleeve | 5.50 | 4.73 | 1/2 | 42" |
| 22464 | 1/6 - 1/2 | Rev | 230 | OAO | Sleeve | 5.50 | 4.73 | 1/2 | 41" |
| 22466 | 1/5 - 3/4 | Rev | 115 | OAO | Ball | 5.80 | 5.73 | 1/2 | 41" |
| 22467 | 1/5 - 3/4 | Rev | 230 | OAO | Ball | 4.60 | 5.23 | 1/2 | 41" |

Toll Free: 800-445-4155 • Fax: 631-348-7160

MARS Technical Help Line: 800-678-9888 M-F 8 am - 5 pm EST

WARNING:
Cancer and Reproductive Harm
www.P65Warnings.ca.gov

Multi-Horsepower Motors



Multi-Horsepower Condenser Fan Motors

JARD multi-horsepower condenser fan motors are designed for either shaft up or shaft down applications. All motors are suitable for air conditioning or heat pump applications. These motors need to be mounted within the airflow of the fan for proper cooling.



Features:

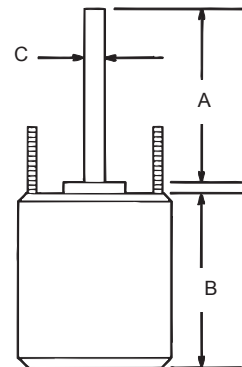
- Rheem mounting holes w/screws installed
- Thru bolt or band mounting
- Water slinger on shaft
- Air conditioning or heat pump duty

Specifications:

- Class "B" insulation
- Single phase, 60 Hz
- Thermal overload protected
- UL Recognized

Cross Reference

| JARD No. | Economaster | Smart Electric | Wagner/Diversitech | Packard | US Motors/Emerson |
|----------|-------------|----------------|--------------------|---------|-------------------|
| 22458 | EM3458 | - | - | 45458BF | 5458 |
| 22459 | EM3459 | - | - | 45488BF | 5464 |
| 22465 | EM3465 | SE3465 | WG840465 | 45458B | 5462 |
| 22468 | EM3468 | SE3468 | WG840468 | - | 5465 |
| 22469 | EM3469 | SE3469 | WG840469 | - | 5464 |



Reversible Rotation - Single Speed

| MARS NO. | HP | ROTATION | RPM/SPEED | VOLTS | ENCL. | BRG. | DIMENSIONS | | | LEAD LENGTHS |
|----------|-----------|----------|-----------|---------|-------|------|------------|------|-----|--------------|
| | | | | | | | A | B | C | |
| 22458 | 1/6 - 1/3 | Rev | 1075 | 208-230 | TEAO | Ball | 6.50 | 3.82 | 1/2 | 36" |
| 22459 | 1/8 - 1/3 | Rev | 825 | 208-230 | TEAO | Ball | 6.50 | 5.48 | 1/2 | 36" |
| 22465 | 1/6 - 1/3 | Rev | 1075/2 | 208-230 | TEAO | Ball | 5.00 | 4.73 | 1/2 | 38" |
| 22468 | 1/8 - 1/2 | Rev | 1075/2 | 208-230 | TEAO | Ball | 5.00 | 5.48 | 1/2 | 38" |
| 22469 | 1/6 - 1/3 | Rev | 825/2 | 208-230 | TEAO | Ball | 5.00 | 5.48 | 1/2 | 42" |

Toll Free: 800-445-4155 • Fax: 631-348-7160

MARS Technical Help Line: 800-678-9888 M-F 8 am - 5 pm EST

WARNING:
Cancer and Reproductive Harm
www.P65Warnings.ca.gov

Multi-Horsepower Motors



Multi-Horsepower Condenser Fan Motors

JARD multi-horsepower condenser fan motors are designed for either shaft up or shaft down applications. All motors are suitable for air conditioning or heat pump applications. These motors need to be mounted within the airflow of the fan for proper cooling.

Features:

- Rheem mounting holes w/screws installed
- Thru bolt or band mounting
- Water slinger on shaft
- Air conditioning or heat pump duty
- 48" Leads

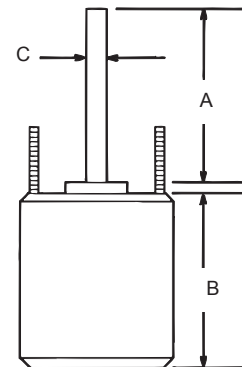
Specifications:

- Class "B" insulation
- Single phase, 60 Hz
- 70°C, 158°F
- Thermal overload protected
- UL Recognized



Cross Reference

| JARD No. | Economaster | Smart Electric | Wagner/Diversitech | Packard | US Motors/Emerson |
|----------|-------------|----------------|--------------------|---------|-------------------|
| 26458 | EM3458 | - | - | - | 5458 |
| 26459 | EM3459 | - | - | - | 5464 |
| 26465 | EM3465 | - | WG840465 | - | 5462 |
| 26468 | EM3468 | - | WG840468 | - | 5465 |
| 26469 | EM3469 | - | WG840469 | - | 5464 |



| MARS NO. | HP | ROTATION | RPM/SPEED | VOLTS | ENCL. | BRG. | DIMENSIONS | | | LEAD LENGTHS |
|----------|-----------|----------|-----------|---------|-------|------|------------|------|-----|--------------|
| | | | | | | | A | B | C | |
| 26458 | 1/6 - 1/3 | Rev | 1075 | 208-230 | TEAO | Ball | 6.50 | 3.82 | 1/2 | 48" |
| 26459 | 1/8 - 1/3 | Rev | 825 | 208-230 | TEAO | Ball | 6.50 | 5.48 | 1/2 | 48" |
| 26465 | 1/6 - 1/3 | Rev | 1075/2 | 208-230 | TEAO | Ball | 5.00 | 4.73 | 1/2 | 48" |
| 26468 | 1/8 - 1/2 | Rev | 1075/2 | 208-230 | TEAO | Ball | 5.00 | 5.48 | 1/2 | 48" |
| 26469 | 1/6 - 1/3 | Rev | 825/2 | 208-230 | TEAO | Ball | 5.00 | 5.48 | 1/2 | 48" |

Toll Free: 800-445-4155 • Fax: 631-348-7160

MARS Technical Help Line: 800-678-9888 M-F 8 am - 5 pm EST

WARNING:
Cancer and Reproductive Harm
www.P65Warnings.ca.gov

