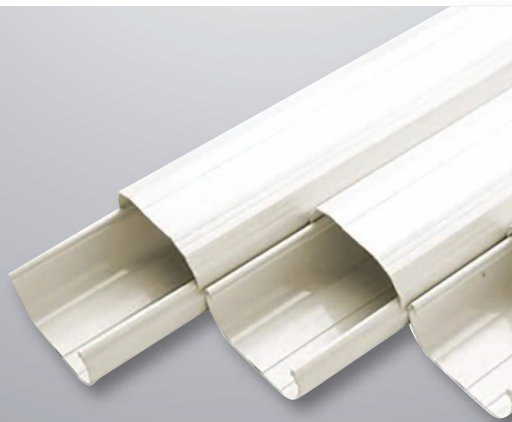
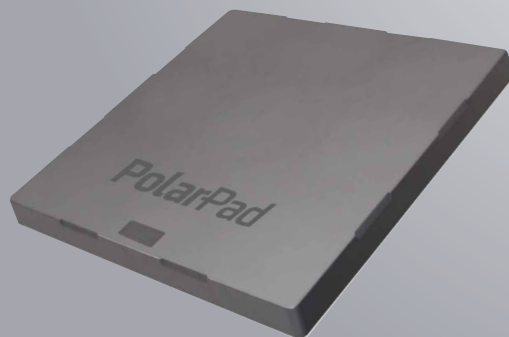
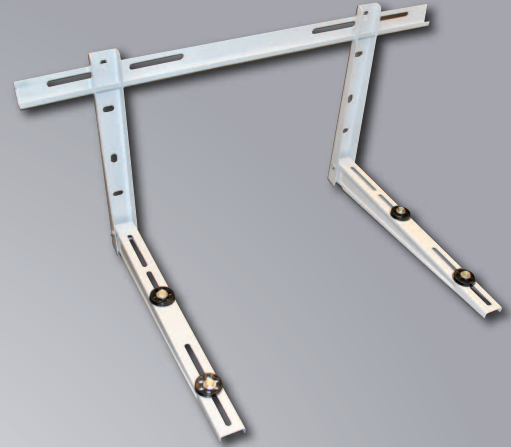
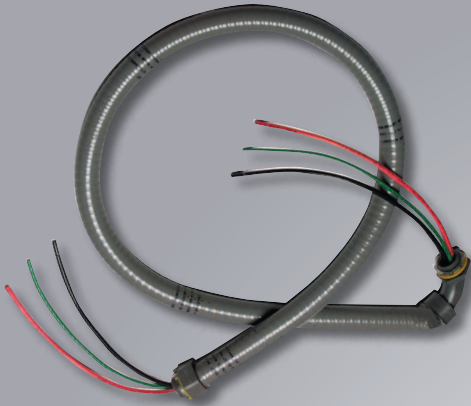


# Mini-Split Components Installation Package

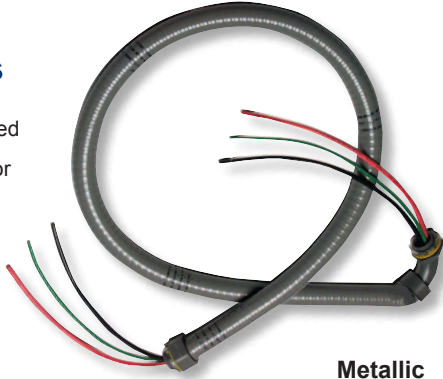


# Installation Package

## Mini-Split Components

### MARS A/C Whips

- Assembly UL listed
- Extra long wire for easy hook up
- Bagged individually



#### Non-Metallic Fittings

MARS NO.	DESCRIPTION	MARS NO.
84131	4' x 1/2" x 10 gauge	84132
84133	4' x 3/4" x 8 gauge	84134
84135	6 x 1/2 x 10 gauge	84136
84137	6' x 3/4" x 8 gauge	84138
84139	8' x 1/2" x 10 gauge	-
84141	8' x 3/4" x 8 gauge	-
84143	10' x 3/4" x 8 gauge	-

#### Metallic Fittings

### MARS Bulk Packaged A/C Whips, Non-Metallic Fittings

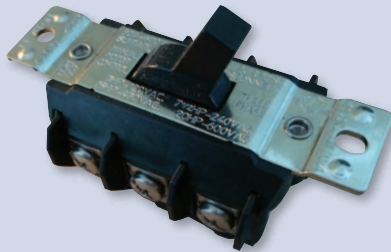
Non-metallic conduit with non-metallic fittings. These are individually packaged. Assembled with UL approved components.

- Packaged gaylord style
- Bulk box for easy access



MARS NO.	DESCRIPTION	MARS PACK
84181	4' x 1/2" #10 ga. non-metallic whip UL	90
84183	4' x 3/4" #8 ga. non-metallic whip UL	60
84185	6' x 1/2" #10 ga. non-metallic whip UL	60
84187	6' x 3/4" #8 ga. non-metallic whip UL	45

### 3 Pole Mini-Split Safety Disconnect Switch



MARS NO.	DESCRIPTION	MARS PACK	CASE QTY
84711	30A-600V 3 Pole 3Ph AC Motor Switch(Bulk)	1	100

Local codes require a disconnect switch to safely shut off power for indoor mini-split AC and Heat Pumps. The disconnect switch will break both power lines L1 and L2 along with the high voltage communicating line to meet local code requirements.

- UL 30 amp rated motor disconnect
- 3 pole
- 600V max

### MARS Disconnect Boxes Side Open Pullout



MARS NO	DESCRIPTION	STD. PACK
80315	60 amp non-fused	6
80316	30 amp fused	6
80317	60 amp fused	6

### Front Open Pullout



- Market leader
- High quality box
- UL & CUL
- NEMA 3R, rainproof
- Single phase
- Pullout type

**#1 Best Seller!**



MARS NO.	DESCRIPTION	MARS PACK
83315	60 amp non fused	6
83316	30 amp fused	6
83317	60 amp fused	6
83396	Compact 30 amp fused	6

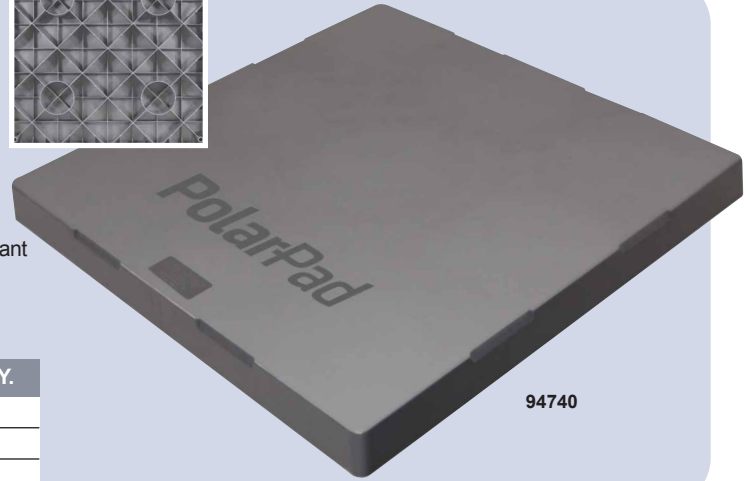
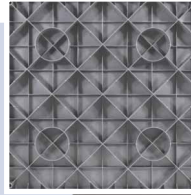
**MARS No. 83335**  
**Description:**  
 Generic brand 60 amp non-fused  
**MARS Pk:** 6

## Mini-Split Components

### PolarPad

Condenser installations begin better with PolarPad. The PolarPad is a plastic pad engineered and designed as a base for HVAC equipment. The pad is injection molded from polyethylene, which is durable, strong, and lightweight. The unique design has strong, uniform ribbing along the underside. The pad is molded with a texture along the top for traction, and rounded edges on the sides to give a clean concrete look and feel.

- UV and Weather Resistance
- Engineered and Designed to Resist Cracking, Breaking and Warping
- Uniform Ribbing
- Strong, Durable and Impact Resistant
- Lightweight
- Oil and Chemical Resistant



94740

MARS NO.	DESCRIPTION	PALLET QTY.
94740	18" x 38" x 3"	32
94777	24" x 24" x 3"	64
94778	24" x 36" x 3"	32

### MARS Flexible Mini-Split Line Set Connectors

MARS flexible line set connectors provide ease of installation for mini-split indoor evaporator units. Flexible line sets allow for line set connection prior to mounting the unit on the wall. Flexible line sets eliminate copper line kinking during the installation process and provide for future ease of service of the AC unit. All flex line sets are 36in. in length to facilitate installation of wall mount evaporators.

#### Features

- High pressure stainless steel braided line rated to 800 psi
- R410a compatible
- 3 inch copper stubs
- 36 inch overall length



MARS NO.	DESCRIPTION	CASE QTY.
52345	1/4" X 36" Mini Split Flex Line Set	1
52346	3/8" X 36" Mini Split Flex Line Set	1
52347	1/2" X 36" Mini Split Flex Line Set	1
52348	5/8" X 36" Mini Split Flex Line Set	1

### MARS Clear Vinyl Tubing

79131-36



MARS NO.	DESCRIPTION	CASE QTY.
79131	1/4" ID clear tubing 32 PSI - .375 O.D.	100 feet
79132	3/8" ID clear tubing 27 PSI - .500 O.D.	100 feet
79133	1/2" ID clear tubing 24 PSI - .625 O.D.	100 feet
79134	5/8" ID clear tubing 21 PSI - .750 O.D.	100 feet
79135	3/4" ID clear tubing 19 PSI - .890 O.D.	100 feet
79136	7/8" ID clear tubing 16 PSI - 1.015 O.D.	50 feet

### Gotec Tattoo 10 Mini-Split Condensate Pump

With an ultra-quiet 16.4 dB sound rating, the Gotec Tattoo 10 mini-split condensate pumps are the quietest mini-split pumps available. Their small size permits easy installation in an evaporator, above the unit in the ceiling, or in the line-set cover.

Kit Includes – Pump, detection unit, connection tube, mounting plate, and mounting accessories.

#### Features & Benefits:

- Quietest mini-split pump available (16.4 dB)
- Silent operation (16.4 dB)
- 26 Ft lift
- 2.6 gal/h capacity
- Alarm (NO/NC 8A 230V)
- For use in systems up to 24,000 BTUs



21795  
21796

21797

MARS NO.	VOLTAGE	MODEL	SOUND LEVEL	MAX FLOW	PUMP DIMENSIONS	DETECTION UNIT DIMENSIONS (IN.)
21795	110	Tattoo 10	16.4 dB	2.6 gal/h	5.9 x 2.1 x 1.1	3.2 x 1.5 x 1.5
21796	230					
MARS NO.	DESCRIPTION					
21797	Replacement Detection Unit for 21795 and 21796					

### MARS Heavy Duty PVC Braided Line Tubing

79045-79050



MARS NO.	DESCRIPTION	WORKING PRESSURE	BURST PRESSURE	CASE QTY.
79045	1/4" ID - .407 OD	120 PSI	360 PSI	50 Feet
79046	3/8" ID - .532 OD	120 PSI	360 PSI	50 Feet
79047	1/2" ID - .673 OD	90 PSI	270 PSI	50 Feet
79048	5/8" ID - .822 OD	90 PSI	270 PSI	50 Feet
79049	3/4" ID - .986 OD	90 PSI	270 PSI	50 Feet



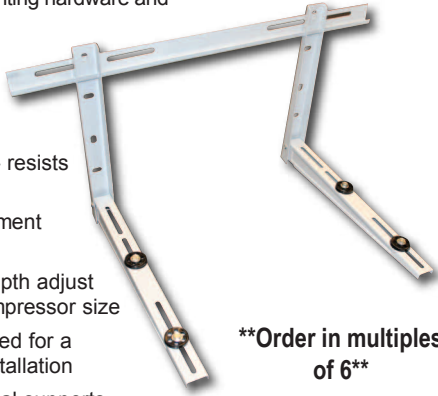
# Installation Package

## MARS Universal Mini-Split Condenser Wall Mount Brackets

MARS mini-split brackets are available in four sizes to accommodate mounting of popular mini-split compressors.

Bracket kits include mounting hardware and vibration absorbers for a professional installation. Pre-assembled vertical supports speed installation.

- Powder Coat Finish - resists rust and corrosion
- Mounting and attachment hardware included
- Bracket width and depth adjust to accommodate compressor size
- Vibration pads included for a durable and quiet installation
- Pre-assembled vertical supports reduce installation time



**\*\*Order in multiples of 6\*\***

MARS NO.	SIZE H x L x W	LOAD CAPACITY (LBS)
93640	14.5" x 18" x 33.5"	260
93641	18" x 22" x 33.5"	330
93642	18" x 24" x 33.5"	400

## MARS A/C Mounting Brackets



Heavy duty engineered steel A/C brackets are used for mounting A/C condensers and heat pumps on vertical walls. Brackets include mounting holes and are finished in a durable gray powder coat.

MARS NO.	DESCRIPTION	MARS PACK
93630	30" Powder Coated Steel Bracket	1 Pair
93631	36" Powder Coated Steel Bracket	1 Pair
93632	42" Powder Coated Steel Bracket	1 Pair
93636	48" Powder Coated Steel Bracket	1 Pair

## MARS Low Profile 60A Non-Fused Disconnect

MARS side open low profile disconnect box is compact while providing easy access to the connection points. The finger safe pullout section prevents accidental contact with the live circuit. The lugs are rated for multi-conductors and are approved for use with surge protection devices.

### Specifications:

- Single phase, 120/240V
- Dimensions: 6.625 x 5 x 2.50
- Tin plated copper pullout
- Lugs rated for multi-conductors
- 10,000 Amp max. rated
- NEMA 3R, rainproof
- cULus rated



80301

MARS NO.	DESCRIPTION	STD. PACK	CASE QTY.
80301	60 amp non-fused	10	10

## Top Open A/C Disconnects, NEMA 3R

MARS offers both fusible and non-fusible single phase air conditioner disconnects. These units provide a disconnecting means which should be located within sight and readily accessible from the air conditioning or refrigerating equipment.

### Specifications:

- Single phase
- 120/240 Volts
- Fused Disconnects - accepts type H fuse (not included)
- 10kAIC
- Enclosure material: galvanized steel
- NEMA 3R, rainproof, outdoor use
- Dimensions: 9.21" H x 5.45" W x 3.13" D



83615

MARS NO.	DESCRIPTION	STD. PACK	CASE QTY.
83615	60 Amp, Non-Fused	6	6
83616	30 Amp, Fused	6	6
83617	60 Amp, Fused	6	6

## Mini-Split Wire



MARS NO.	DESCRIPTION	DIA. (in.)
<b>COMPACT 600 CABLE: 600V, UL, UV RATED, DIRECT BURIAL</b>		
84473	14/4 Solid THHN Compact 600 – 50' Roll	0.336
84474	14/4 Solid THHN Compact 600 – 250' Reel	0.336
84479	14/4 Stranded THHN Compact 600V – 50' Roll	0.352
84480	14/4 Stranded THHN Compact 600V – 250' Reel	0.352
<b>SHIELDED LOW VOLTAGE CABLE: 300V, NEC 725/800, ETL, CMR/CL3R</b>		
84485	16/2 Stranded Shielded – 50' Roll	0.191
84484	16/2 Stranded Shielded – 250' Roll	0.191
84491	16/4 Stranded Shielded – 50' Reel	0.212
84483	18/4 Stranded BC Shielded – 500' Reel	0.180
<b>EZ-IN™ CABLE: 600V, UL, ALL PURPOSE, UV RATED, DIRECT BURIEL</b>		
84486	14/4 Stranded E-Z In, 600V, 50' Roll	0.553
84487	14/4 Stranded E-Z In, 600V, 250' Reel	0.553

## MARS Mini-Split Run Capacitors

MARS mini-split motor run capacitors are epoxy/resin sealed and widely used as the start-up and/or run capacitor for your motor. They feature very small dissipation factor and inherent temperature rise, high insulation resistance, and stable capacitance.

### Technical Specification:

- Ambient temperature: 70° C
- Rated voltage: 450 VAC
- Capacitance tolerance: ±5
- 50/60 Hz
- Standard: IEC252-2001



MARS NO.	DESCRIPTION	DIMENSIONS		
		H	D	W
12380	1 MFD X 450V	1-1/2	X 1/2	X 1
12381	1.5 MFD X 450V	1-1/2	X 1/2	X 1
12382	2 MFD X 450V	1-1/2	X 1/2	X 1
12383	2.5 MFD X 450V	1-1/2	X 3/4	X 1-1/4
12384	3 MFD X 450V	1-1/2	X 3/4	X 1-1/4
12385	3.5 MFD X 450V	1-7/8	X 3/4	X 1-3/8
12386	4 MFD X 450V	1-7/8	X 3/4	X 1-3/8
12388	5 MFD X 450V	1-7/8	X 7/8	X 1-3/8
12390	6 MFD X 450V	1-7/8	X 1	X 1-1/2

## MARS Universal Remote Control for Mini-Split Units

MARS Universal Remote will operate with virtually any mini-split produced in any region of the world. Programming is accomplished by inputting your mini-split brand code or use the easy and intuitive self learn mode to set-up the remote to operate your Mini-Split. Operates with 2 AAA batteries.

- One touch function with LCD display
- Celsius or fahrenheit display
- Clock display
- 24 Hr. on/off timer for energy savings
- Displays room temperature
- Energy saver feature
- Automatically determines heat or cool mode



MARS NO.	DESCRIPTION	MARS PACK
65775	Mini-Split Universal Remote	1

## MARS Putty

MARS Putty is non-hardening, non-toxic and can be shaped by hand to any form, and reused if necessary, for plugging openings through foundations, sealing around electrical boxes, refrigeration tube entry and so much more.



MARS NO.	DESCRIPTION	MARS PACK	CASE QTY.
93520	1 lb. Slug - Boxed	1	50
93521	5 lb. Slug - Boxed	1	10
93522	2 lb. Slug - Boxed	1	24

## MARS Corrugated Condensate Drain Line

- Ideal for Ductless Mini-Split
- 5/8" Diameter, 20 Ft. Long
- Flexible Ivory
- Corrugated non-kink



MARS NO.	DESCRIPTION	MARS PACK
79127	5/8" Diameter x 20 ft long, Condensate Drain Line	1

# Installation Package

## MARS HVAC Surge Protective Device

The MARS SPD is designed to protect your HVAC equipment from power spikes, surges and transients. Power spikes and surges can damage compressors, control boards, sensors and ECM motors resulting in costly repairs and down time. The MARS SPD utilizes Thermally Protected MOV technology to provide safe and reliable surge protection.

### Protects:

- Compressors
- Heat Pumps
- Ideal for Ductless Systems
- Inverter Boards
- ECM Motors
- Control Boards
- Transformers
- Relays
- Sensors

### Features:

- Easy Installation to Disconnect
- Weatherproof 4X Enclosure
- 18" Pre-stripped Leads
- Green & Red LED Status Indicators
- Thermally Protected MOVs
- 120/240V Single (Split) Phase 50/60Hz
- Short Circuit Current Rating
  - 22,000 Amps
- MCOV L-G 150V / L-L 300V
- Voltage Protection Rating
  - L-G 700V / L-L 1200V
- UL 1449 4th Edition
- Type 1 or 2 Surge Protection Rating
- 3 Year Warranty
- \$7,500 Connected Equipment Warranty



## MARS HVAC Surge Protective Device

The MARS 83904 SPD is designed specifically for 120V furnace and air handler applications. The furnace and air handler contain components that must be protected from surges such as, ECM motors, Control Boards, Transformers. The MARS Surge utilizes thermally protected MOV technology for safe and reliable protection of equipment. The 120V Surge Device is easy to install with only 2 wires to connect.

### Protects:

- Ideal for 120V Ductless Systems
- Furnace & Air Handlers
- Inverter Boards
- ECM Motors
- Control Boards
- Transformers
- Relays
- Sensors

### Features:

- Easy 2 Wire Installation
- 10" Pre-stripped Leads
- Green LED Status Indicator
- Thermally Protected MOVs
- 120V Single Phase 50/60Hz
- Short Circuit Current Rating
  - 10,000 Amps
- MCOV L-G 150V
- Voltage Protection Rating
  - L-G 700V
- UL 1449 4th Edition
- Type 1 or 2 Surge Protection Rating
- 3 Year Warranty
- \$7,500 Connected Equipment Warranty



MARS NO.	VOLTAGE	WIRE CONFIGURATION	SPD TYPE	MCOV	ENCLOSURE	UL 1449 4TH EDITION
83905	120/240	L-L, L-G	1 or 2	150/300	Type 4X	cULus

MARS NO.	VOLTAGE	WIRE CONFIGURATION	SPD TYPE	MCOV	ENCLOSURE	UL 1449 4TH EDITION
83904	120	L-G	1 or 2	150	Type 2	cULus

## MARS 60 Amp Non-Fused Disconnect with Internal Surge

MARS Disconnect with integrated surge protector provides a unitized design for quick and clean installation. The metal weather-resistant enclosure provides additional robustness and security. MARS Surge Protectors provide the performance necessary to protect critical components in high efficiency mini-split and unitary HVAC equipment.

### Features:

- Side open disconnect
- Integrated internal surge protector
- Thermally Protected MOV's
- Metal-weather resistant enclosure
- External - Green & Red LED Status Indicators
- 3 Year Warranty
- \$7,500 Connected Equipment Warranty

### Specifications Disconnect:

- Single phase 240V
- 10,000 Amp rating
- NEMA 3R enclosure
- Weather proof enclosure
- Available in fused and non-fused

### No. 83910 Surge Protector:

- 120/240V Single (Split) Phase 50/60Hz
- Short Circuit Current Rating
  - 22,000 Amps
- MCOV L-G 150V / L-L 300V
- Voltage Protection Rating
  - L-G 700V / L-L 1200V
- UL 1449 4th Edition
- Type 1 or 2 Surge Protection Rating

### Protects:

- Compressors
- Heat Pumps
- Ideal for Ductless System
- Inverter Boards
- ECM Motors
- Control Boards
- Transformers
- Relays
- Sensors

MARS NO.	DESCRIPTION	ENCLOSURE	INCLUDES SURGE PROTECTOR
83915	60 Amp Non-Fused w/Surge Module	NEMA 3R, Rainproof	MARS NO. 83910
83916	30 Amp Fused w/Surge Module	NEMA 3R, Rainproof	MARS NO. 83910
83917	60 Amp Fused w/Surge Module	NEMA 3R, Rainproof	MARS NO. 83910

MARS NO.	DESCRIPTION
83910	Replacement Surge Module For 83915, 83916 and 83917





## Line Set Covers

Attractive and durable line set cover for protecting and concealing refrigerant tubing/insulation, control wire, and drains. Ideal for ductless and all other applications requiring exposed refrigeration line sets. All connectors have front and back plates which fasten together with two screws.

- Vulnerable components are protected from solar/environmental exposure
- Aesthetically conceals mechanicals in architectural-grade, paintable plastic duct
- Two (2) separate cover sizes to choose from – 3" and 4" duct widths – provide ample room for multiple line sets and larger tonnage equipment
- Easy, flexible configuration for new or retrofit applications



93729

### Product & Accessories



**93729**  
3.25' Straight Duct, 3"  
Case Qty: 8



**93738**  
3.25' Straight Duct, 4"  
Case Qty: 6



**93730**  
Wall Cover, 3"  
Case Qty: 5



**93739**  
Wall Cover, 4"  
Case Qty: 5



**93731**  
90° Wall Corner, 3"  
Case Qty: 10



**93740**  
90° Wall Corner, 4"  
Case Qty: 5



**93732**  
90° Corner, 3"  
Case Qty: 5



**93741**  
90° Corner, 4"  
Case Qty: 5



**93733**  
Plane Corner, 3"  
Case Qty: 10



**93742**  
Plane Corner, 4"  
Case Qty: 5



**93734**  
Duct Connector, 3"  
Case Qty: 10



**93743**  
Duct Connector, 4"  
Case Qty: 5



**93735**  
End Cap, 3"  
Case Qty: 5



**93744**  
Flexible Duct, 4"  
Case Qty: 5



**93736**  
Flexible Duct, 3"  
Case Qty: 10



#### 93728 3" Line Set Cover Kit:

- 4 x 93729 3.25' Straight Duct
- 1 x 93731 90° Wall Corner
- 1 x 93732 90° Corner
- 1 x 93733 Plane Corner
- 3 x 93734 Duct Connector
- 1 x 93735 End Cap
- 1 x 93736 Flexible Duct

Case Qty: 1



#### 93737 4" Line Set Cover Kit:

- 4 x 93738 3.25' Straight Duct
- 1 x 93740 90° Wall Corner
- 1 x 93741 90° Corner
- 1 x 93742 Plane Corner
- 3 x 93743 Duct Connector
- 1 x 93744 Flexible Duct

Case Qty: 1



**WARNING:**  
Cancer and Reproductive Harm  
[www.P65Warnings.ca.gov](http://www.P65Warnings.ca.gov)



Toll Free: 800-445-4155 • Fax: 631-348-7160 • [www.marsdelivers.com](http://www.marsdelivers.com)

©2024 MOTORS & ARMATURES, Inc.  
MARS is a registered trademark of Motors & Armatures, Inc.