

# MARS 780

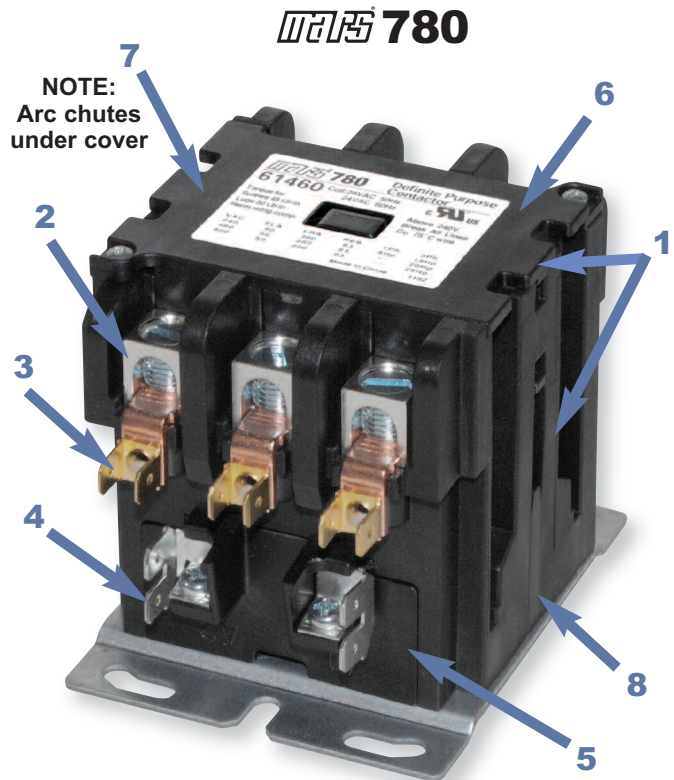
## Professional Grade

### Do you know your definite purpose contactor?

The MARS 780 definite purpose contactor is engineered for today's most demanding commercial refrigeration and HVAC applications. The finest components and materials along with innovative engineering make the 780 the most trusted DP contactor available. While other contactors may look similar, only the MARS 780 is truly professional grade.

## What Makes a Professional Grade Contactor?

- 1. Enclosed Body** reduces the penetration of dirt and insects providing a quieter running contactor and a longer life expectancy.
- 2. Oversized 'Arch Window'** lugs simplify wire installation especially in tight panels.
- 3. High Performance Copper & Brass Conductors** maximize current carrying capability creating a cooler running contactor. Heat kills contact points and coils.
- 4. Multi-purpose Coil Terminals** allow the use of QC terminals or stripped wires.
- 5. Removable Coils** allow field replacement of damaged coils as well as the modification of inventory when different coil voltages are needed.
- 6. Removable Cover** provides full access to the contacts for easy inspection and maintenance.
- 7. Captive Arc Chutes** will not fall out and get lost when the cover is removed for maintenance.
- 8. Thermoplastic Housing** resists dusting and contamination of the contacts to maintain maximum conductivity.



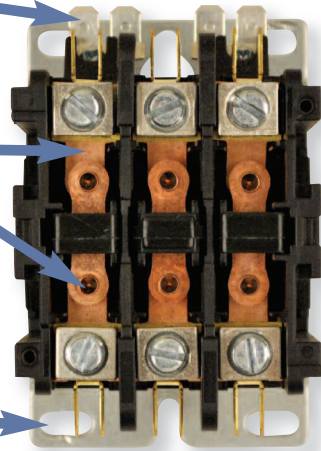
# MARS 780 Professional Grade

**Accessible Coil Terminals** simplify wiring in tight panels

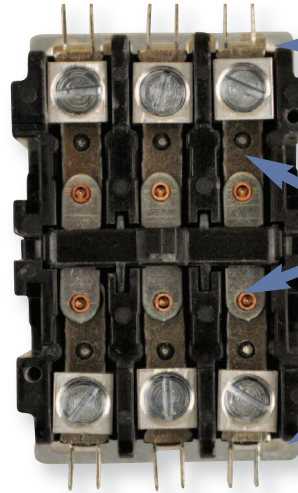
**Copper Conductors** provide superior conductivity minimizing heat and maximizing contactor life expectancy

**Unobstructed Mounting Holes** are easily reached with tools

**MARS 780**  
30A/40A



**Packard Titan Max**  
30A/40A

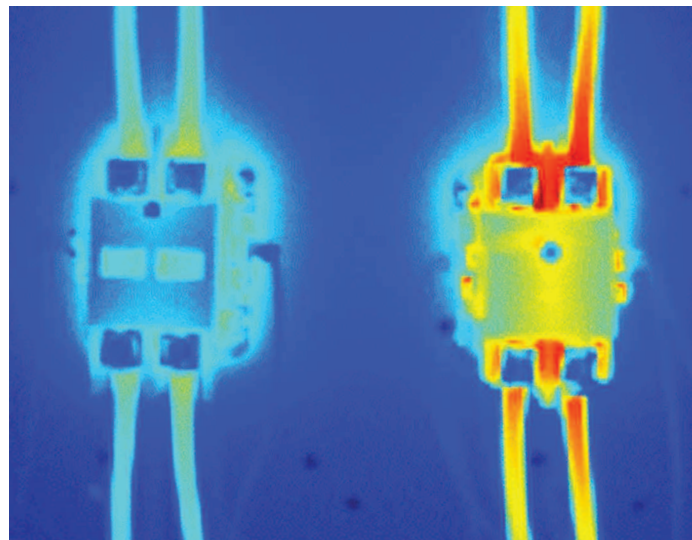


Concealed coil terminals

Low conductivity steel conductors

Obstructed mounting holes

**MARS 780**  
2P-40A

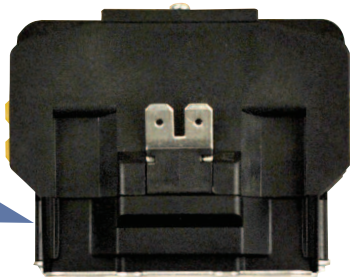


Heat destroys components. Thermal imagery depicts significant heat generation of the steel conductor equipped Titan Max contactor.

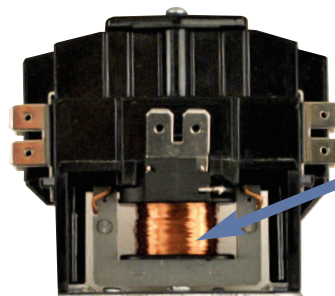
Copper conductors provide a cool running MARS 780.

**Packard Titan Max**  
2P-40A

**Fully Enclosed Coil and Magnet/Armature** assembly to protect the internals from insects and debris increasing contactor life expectancy



**Packard Titan Max**



Fully exposed coil and Magnet/Armature